

Statue on exit road from Mt St Mary's Academy, Watchung, NJ



On first examination it was determined that the break was actually a failed repair. Remnants of the repair material were obviously of a composition other than that of the rest of the piece. Fortunately, the armature was intact and so it was possible to realign the parts and proceed with the repair.



Having realigned the parts, the surrounding material was moistened, and the void packed with Keim Farben Grund.

Once solidly filled, the parts were securely bound to stabilize them, and the joint repacked to insure a full bond.



The repair was covered for protection from the weather and left to cure.

Two days later, the Grund had achieved a sound cure. The bindings could be removed, and the parts are here seen in true alignment.





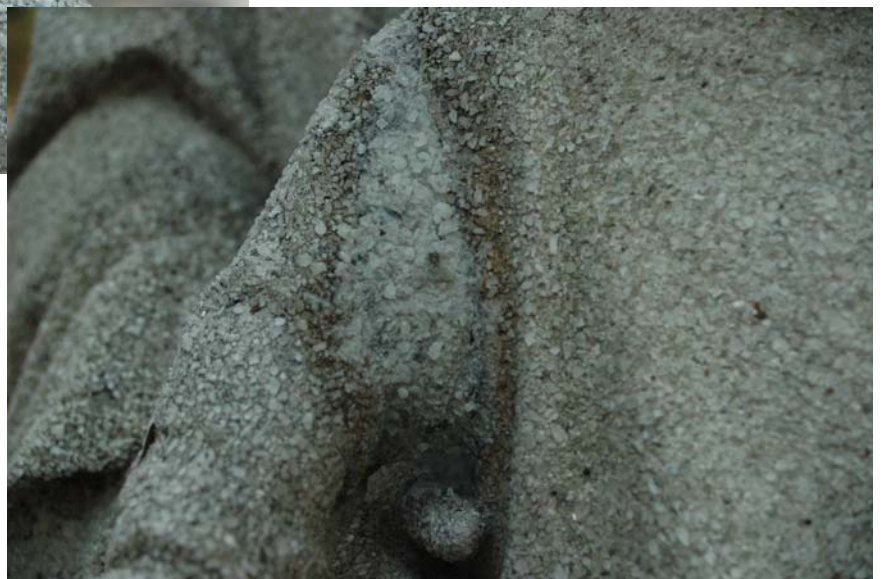


With the appropriate aggregate identified and procured, the topcoat could be formulated and applied.

After a wait of some few hours an initial tooling of the fill was possible.



These last two photos show a first attempt at tinting the fill to match the surrounding material.



On returning to the site for final touching, it was found that the changed topography of the restored area, with a different drainage pattern, had encouraged resumption of the original coloration of the material surrounding the repair. The finished repair had effectively blended with the original material.

